



MTC 3000 Controller Series

Proven technology for diverse applications

Traffic in motion 

 **Signalbau Huber**

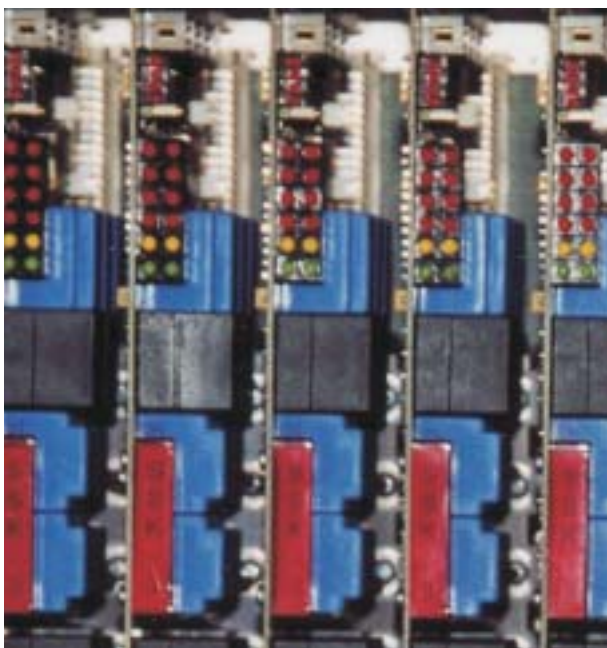
Optimizing traffic with traffic light systems

To face the problems brought by the rising volume of traffic we develop intelligent control systems. Here, traffic light systems are in the focus.

Using a Signalbau Huber traffic light control system brings many benefits: Traffic flow is harmonized, environmental pollution by exhaust gases and noise decreases. Above all, traffic light systems support safety in road traffic.

Moreover, the prioritization of public transport can be optimally implemented by means of traffic light systems.

For the whole spectrum of applications, from small junctions to complex intersections, Signalbau Huber has systematically enhanced the MTC 3000 Controller Series. The MTC 300 and 3000 controllers have already proved themselves in practice many times over.



Proven technology from Signalbau Huber

Signalbau Huber products combine many years of practical experience with new developments. Customer orientation is the prime consideration here, which is why our systems are variable, scalable and configurable in accordance with individual wishes. In this way we ensure that the most varied requirements are economically met.

Flexible data supply to controllers

The MTC 3000 Series controllers from Signalbau Huber are programmed using a high-level programming language (TOP 3000). Diverse applications and adaptations are thus possible in software terms. The use of already existing modules simplifies programming.

The compiler available for TOP 3000 immediately checks the prepared software and provides appropriate feedback if errors are found. Needless to say, high outlay on exhaustive testing of traffic-control software is thus avoided.



Modern microelectronics for traffic applications

The proven MTC 3000 Controller Series from Signalbau Huber has been further enhanced by systematic refinement of the modules. The equipment is based on a high-performance up-to-date microprocessor control system. Continuous self-monitoring eliminates traffic-endangering situations. Extremely high system availability and reliability are guaranteed. Integral mains monitoring ensures the lights' permanent visibility and enables automatic shutdown and restarting in the event of mains variation.

The control system used can be co-ordinated with other controllers. The controllers can also be linked to a central traffic computer through the interfaces provided, e.g. OCIT. Thanks to consequent comprehension of modern technologies, the traffic controller is cost-efficient in installation and operation.

For ease of maintenance, all the electronics are housed in a swivel frame. Status reports can be called up on the integral display panel and individual parameters can be changed online. It is also possible to supply data and set parameters using a portable computer. The cases

used are tried-and-tested standard cabinets which also house the traffic light system's power supply unit.

To implement traffic-dependent signal control, a variety of detectors is available. Detector signals are collected in a 10 ms/100 ms pattern and further processed by the traffic technology software. The cycle time of the traffic software is 500 ms and thus only 50% the cycle time of most other manufacturers. Due to the fast processing of the detector signals, the capacity of the junction can be significantly increased. A radio clock (DCF-77 receiver) is available as an option. The 19" system used in the swivel frame also enables modules from outside sources to be incorporated. Both installation of components for public transport priority and connection to a central traffic computer are prepared for. Other functions, e.g. incident reporting modules and data loggers, can be easily adapted.

Consistent incorporation of modern technologies makes MTC 3000 inexpensive to install and operate: The MTC 3000 Traffic Controller Series is a system equal to the challenges of today and tomorrow.



Signalbau Huber Company Profile

For more than 50 years, Signalbau Huber has been operating in the field of traffic control and traffic guidance. We develop and implement innovative traffic management systems based on the long-time know-how of experienced and highly qualified employees. Our diversified product range enables us to provide the optimal solution for every traffic-technological requirement.

Signalbau-Huber is operating internationally and is represented in many countries.

Contact

Headquarters

of Signalbau Huber and sales support point for Bavaria is Munich. You will also find us at the following locations in Germany:

Southern Germany (except Bavaria):

Signalbau Huber GmbH
Kelterstrasse 67
D-72669 Unterensingen
Phone: +49 (0)711 / 3 45 50-200
Fax: +49 (0)711 / 3 45 50-199

Western Germany:

Signalbau Huber GmbH
Hiltroper Strasse 258
D-44805 Bochum
Phone: +49 (0)234 / 9 59 13-0
Fax: +49 (0)234 / 9 59 13-11

Northern and Eastern Germany:

Signalbau Huber GmbH
Sickingenstrasse 26-28
D-10553 Berlin / Tiergarten
Phone: +49 (0) 30 / 92 40 39-18
Fax: +49 (0) 30 / 92 40 39-22

International

Signalbau Huber GmbH

Kelterstrasse 67
D-72669 Unterensingen
Phone: +49 (0)711 / 3 45 50-171
Fax: +49 (0)711 / 3 45 50-179
E-Mail: info@signalbau-huber.com
Internet: www.signalbau-huber.com

For Austria, Hungary, Czech Republic, Slovakia, Poland and Greece:

Signalbau Huber Verkehrstechnik GmbH

Nobilegasse 23-25
A-1150 Vienna
Phone: +43 (0)1 / 983 57 63-0
Fax: +43 (0)1 / 983 57 63-13
E-Mail: info@signalbau-huber.at
Internet: www.signalbau-huber.at

Editor: Signalbau Huber GmbH
Last update: July 2004

Reprint, even in extracts, only with written permission of the editor
Technical data subject to change SH-MTC3-EN-07/04

Signalbau Huber GmbH

Bodenseestrasse 113
D-81243 Munich
Phone: +49 (0)89 / 89 699-100
Fax: +49 (0)89 / 89 699-331
E-Mail: info@signalbau-huber.de
Internet: www.signalbau-huber.de

