



ISY-GUARD

Incident Reporting System

Features of Incident Reporting Systems

Safe operation of traffic light systems is an important requirement for a smooth traffic flow and thus for safety on our roads. But even when using reliable technology, malfunctions – e.g. by external impacts – cannot be eliminated.

The most important feature of an incident reporting system is the quick reporting of all events which interfere the normal operation of a traffic light system and thus elongate the flow of traffic.

Incident reporting systems for traffic lights alert in case of malfunctions, display the system data in the incident reporting center and consequently provide high system availability and road safety.

By providing additional data for traffic statistics, trends can be identified faster and easier and a quicker reaction to changing situations is possible.

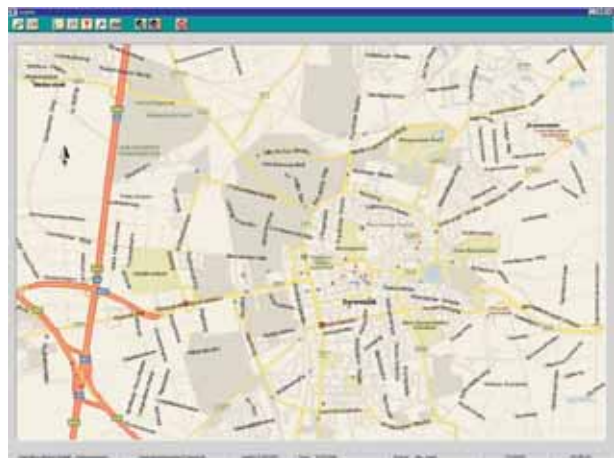


Incident Reporting System ISY-GUARD: System Benefits

The incident reporting system ISY-GUARD from Signalbau Huber meets all requirements in an ideal way:

- By an optimized identification of malfunctions the **downtime of a traffic light system can be significantly reduced**. This increases the safety at the junction.
- A more efficient system maintenance **reduces the cost of operation**.
- External modules inside the traffic controllers report all incidents via **any communication channel** (radio, GSM, fixed network, dedicated line) to the incident reporting center where appropriate reactions are coordinated.
- Another optional ISY-GUARD feature is the **use of the data pool**, e.g. by readout of detector statistics.

Due to a modular structure, ISY-GUARD can also be used in other fields of application, e.g. tunnel technology, house automation, environmental data collection, sensor technology, etc.



ISY-GUARD: System Structure

The incident reporting system ISY-GUARD from Signalbau Huber can be characterized as very user-friendly, with an ergonomic user interface and an extensive scope of benefits.

Thanks to the modular structure of ISY-GUARD the system can be customer-specifically and flexibly extended around a basic module:

The **Basic Module** provides all basic functions as alarming and reception of incident messages, communication and user administration. 5 traffic light systems can be connected to the basic version. Optional upgrading allows the flexible adaptation to the current and future number of traffic controllers.

Various modules in addition to the basic module enable the realization of further functionalities:

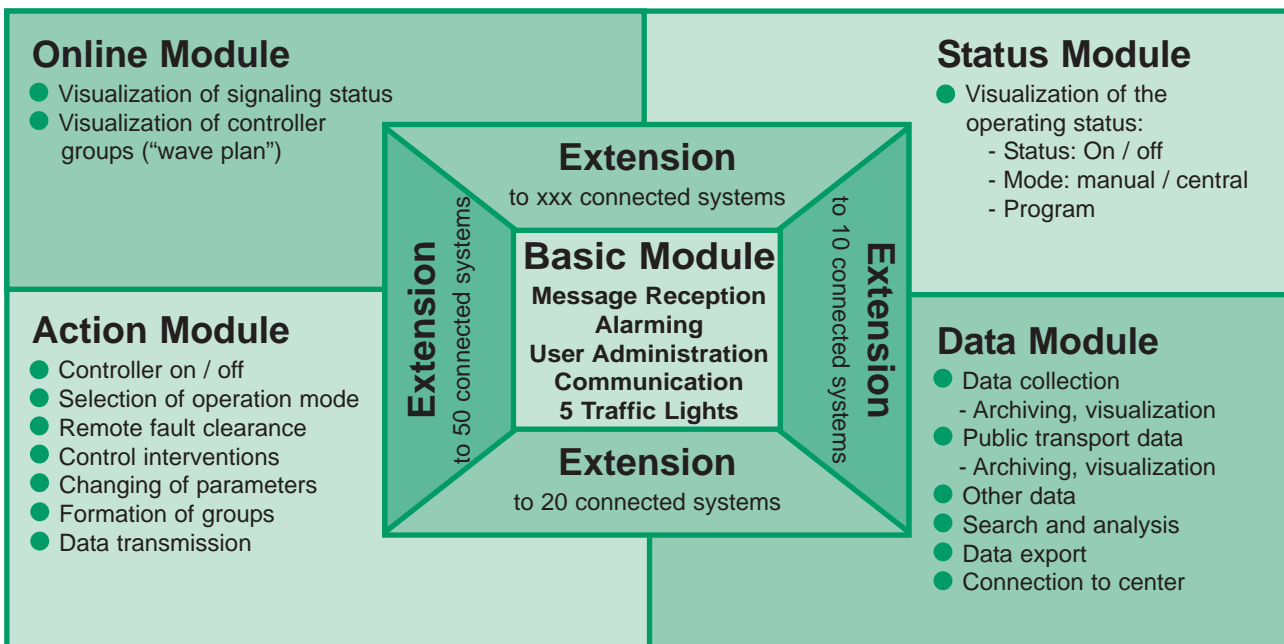
The **Status Module** visualizes the operating status at the incident reporting centre and thus gives a quick overview of the operational readiness of the traffic controllers.

An **Action Module** allows the realization of various actions in the traffic controller, e.g. control interventions or changing of parameters.

The **Data Module** archives and visualizes data of the local detectors. Substantial routines for search and analysis form the basis for an optimal traffic planning.

With the **Online Module** the signaling status and detector status of individual controllers and of groups of controllers can be visualized in real-time. This enables an easy evaluation of the current traffic situation.

All modules can be individually integrated, and thus facilitate a flexible and customer-specific adaptation of the system.



Incident Reporting Module: „ISY-GUARD call“

To guarantee all incident reporting tasks, all traffic controllers are equipped with the incident reporting module „ISY-GUARD call“. This module is integrated in the existing traffic controller cabinet.

The connection to the traffic controller can be realized either in a serial or in a parallel way. Traffic controllers of every manufacturer can be connected. In this way, the close monitoring of all traffic lights within a region can be realized.

The incident reporting module „ISY-GUARD call“ can be operated with different supply voltages. An optionally supplied accumulator guarantees an incident report even in case of power failure.

When working as a “stand-alone” solution, messages from „ISY-GUARD call“ are transmitted via SMS.

Incident Reporting Center: „ISY-GUARD net“

In the incident reporting center „ISY-GUARD net“ all actions are synchronized: The most important features are

- Visualization of incoming data and messages on a map or network plan
- Initializing of programmes
- Direct interventions and controlling of traffic controllers
- Archiving of data
- Automatic transmission to service or maintenance personnel

Communication Channels

The connection of local incident reporting modules to the incident reporting center „ISY-GUARD net“ can be realized in different ways:

- By radio transmission (wave band 433 MHz, 2-m-band, digital radio network, etc.)
- Via GSM transmission (Global System for Mobile Communication)
- Dedicated line between traffic controller and incident reporting center
- Fixed network

The combination of different communication channels is possible. In this way remote traffic controllers can be easily integrated into the system.

Hardware Configuration of the Incident Reporting Center

The incident reporting center “ISY-GUARD net” from Signalbau Huber can be installed on every standard personal computer.

The software works with the Windows operation system. An ergonomic and plain user interface allows a comfortable handling and control of the system.



Options for Operation

By the use of additional modems (up to 1024) multiple online connections can be established at the same time. This facilitates the reception of incident messages during online visualization.

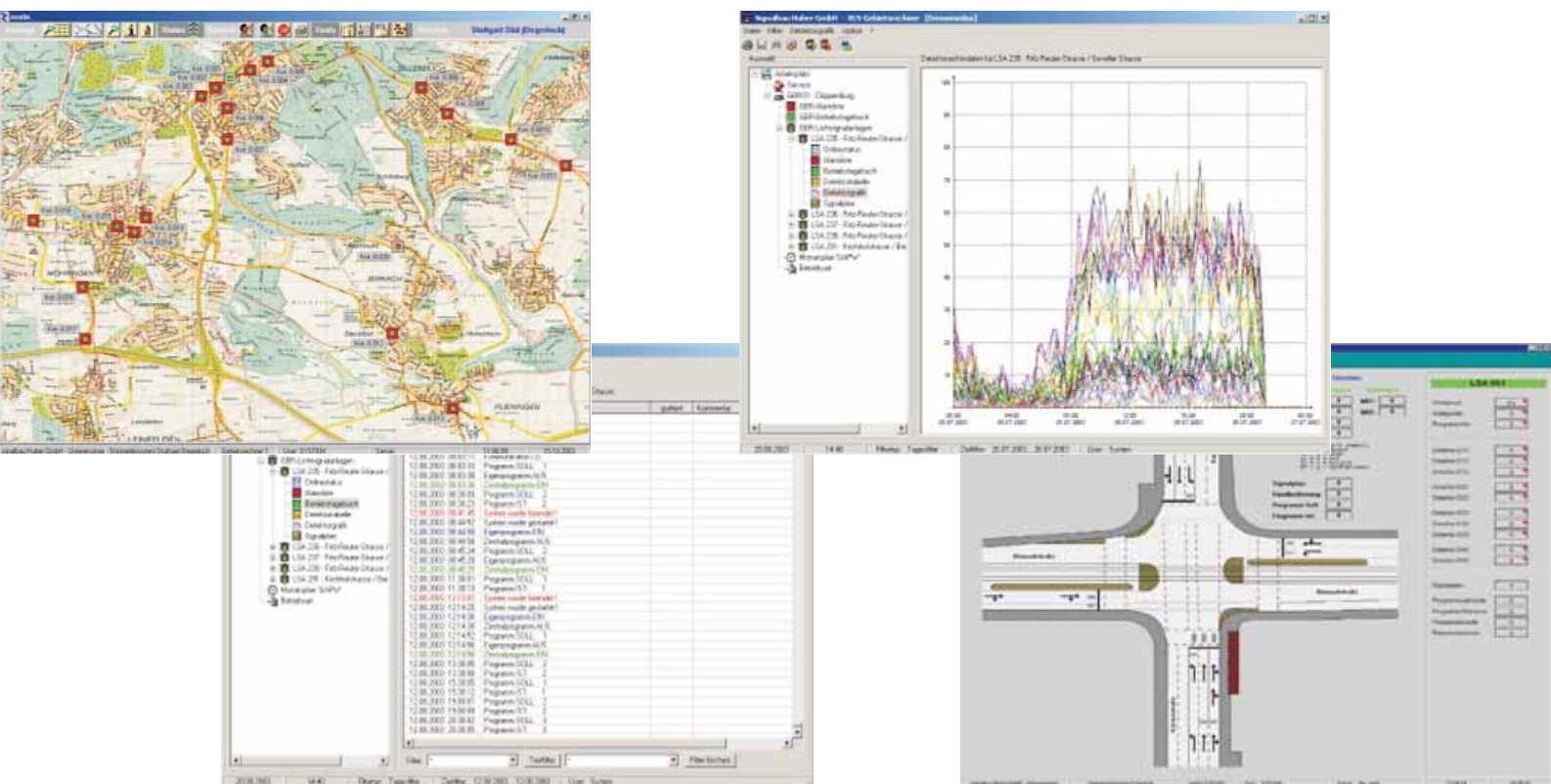
Of course, ISY-GUARD can be networked, i.e. more terminals can be connected; and thus police and fire departments can be informed. Multi-user ability is a matter of course:

By defining different levels of authorization and password-protected areas various users can be connected to the system and benefit from the flow of information; operation and actions of commands are user-specificly defined.

The transmission of important messages is possible via e-mail, SMS or fax; for this reason the incident reporting center must not be occupied all the time.

Service

Signalbau Huber offers a regular software update to the operating company to ensure that systems and software are always up-to-date.



Signalbau Huber Company Profile

For more than 50 years, Signalbau Huber has been operating in the field of traffic control and traffic guidance. We develop and implement innovative traffic management systems based on the long-time know-how of experienced and highly qualified employees. Our diversified product range enables us to provide the optimal solution for every traffic-technological requirement.

Signalbau-Huber is operating internationally and is represented in many countries.

Contact

Headquarters

of Signalbau Huber and sales support point for Bavaria is Munich. You will also find us at the following locations in Germany:

Southern Germany (except Bavaria):

Signalbau Huber GmbH
Kelterstrasse 67
D-72669 Unterensingen
Phone: +49 (0)711 / 3 45 50-200
Fax: +49 (0)711 / 3 45 50-199

Western Germany:

Signalbau Huber GmbH
Hiltroper Strasse 258
D-44805 Bochum
Phone: +49 (0)234 / 9 59 13-0
Fax: +49 (0)234 / 9 59 13-11

Northern and Eastern Germany:

Signalbau Huber GmbH
Sickingenstrasse 26 - 28
D-10553 Berlin / Tiergarten
Phone: +49 (0)30 / 92 40 39-18
Fax: +49 (0)30 / 92 40 39-22

International

Signalbau Huber GmbH

Kelterstrasse 67
D-72669 Unterensingen
Phone: +49 (0)711 / 3 45 50-171
Fax: +49 (0)711 / 3 45 50-179
E-Mail: info@signalbau-huber.com
Internet: www.signalbau-huber.com

For Austria, Hungary, Czech Republic, Slovakia, Poland and Greece:

Signalbau Huber Verkehrstechnik GmbH

Nobilegasse 23-25
A-1150 Vienna
Phone: +43 (0)1 / 983 57 63-0
Fax: +43 (0)1 / 983 57 63-13
E-Mail: info@signalbau-huber.at
Internet: www.signalbau-huber.at

Editor: Signalbau Huber GmbH
Last update: März 2004

Reprint, even in extracts, only with written permission of the editor
Technical data subject to change SH-STM-EN-03/04

Signalbau Huber GmbH

Bodenseestrasse 113
D-81243 Munich
Phone: +49 (0)89 / 89 699-100
Fax: +49 (0)89 / 89 699-331
E-Mail: info@signalbau-huber.de
Internet: www.signalbau-huber.de

Traffic in motion 

